

Hyper Terminal or equal: 9600/8/N/1

Use a straight serial cable DB9.

On table top units just hit ENTER, on Rack Cards either <%SN> (SlotNumber) e.g. to select the LTU in slot 01, type %01.

To see which units in a rack are available, you can use the <ECHO> command.

Each present unit will respond with its associated slot number (%SN).

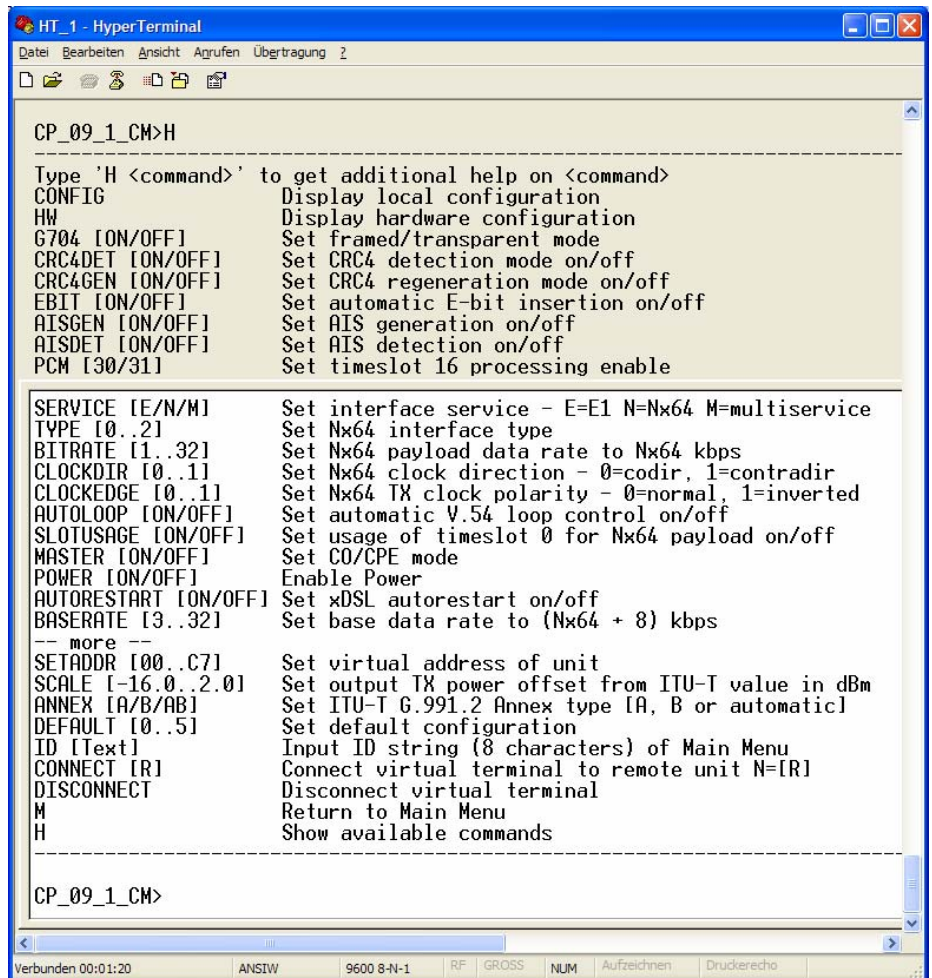
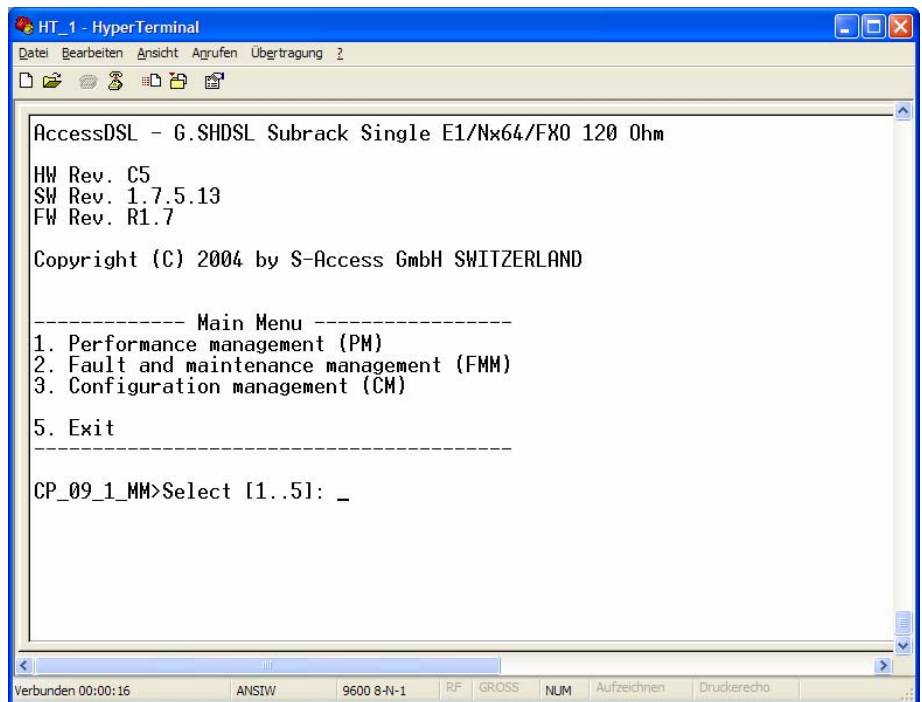
The response could be:
%01 %03 %08 %10 %11 %12

Each command must be terminated by a carriage return.

Go to Menu 3

Type <H> to get a list of all available commands

Use <M> to go back to main menu

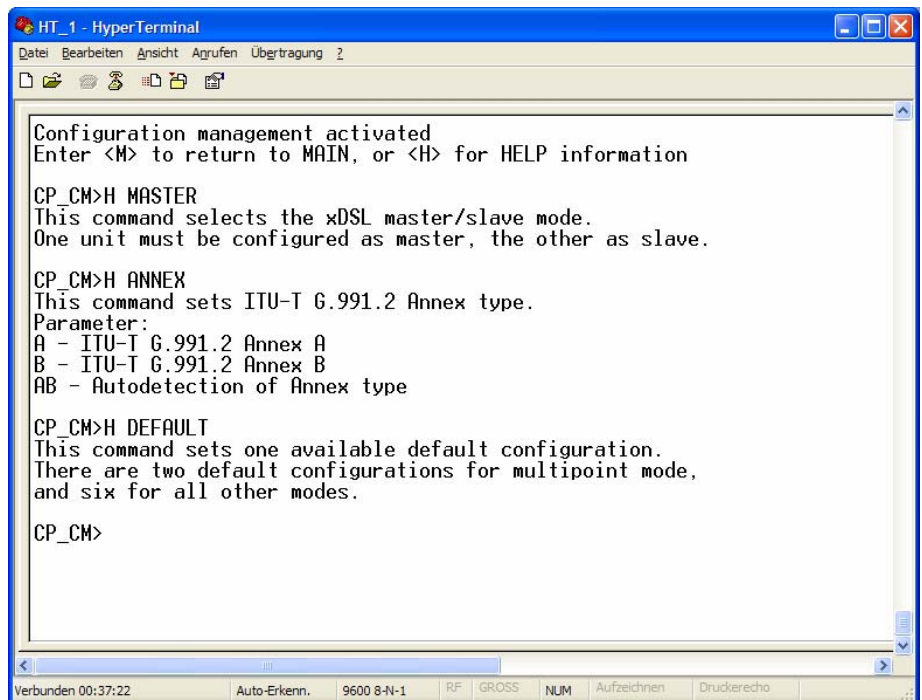


Help is available for each command, just type the letter "H" and the command:

For example:
<H MASTER>

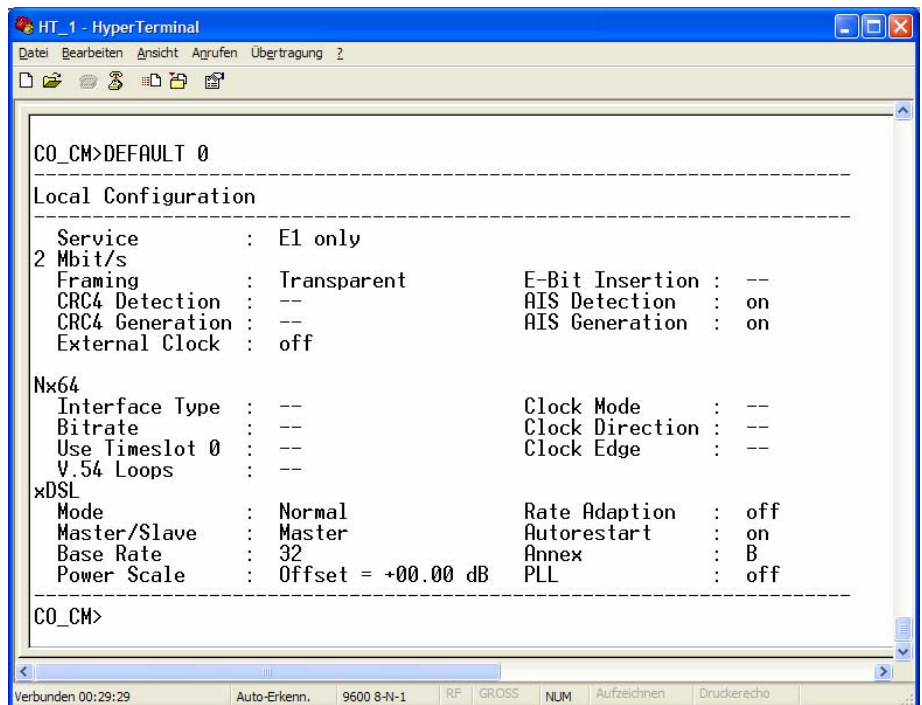
<H ANNEX>

<H DEFAULT>



There are different default configurations pre saved in the EEPROM.

Use <DEFAULT 0>
To get E1/G.703 in transparent mode as MASTER



<DEFAULT 1>
To get E1/G.704 in framed mode as MASTER

```

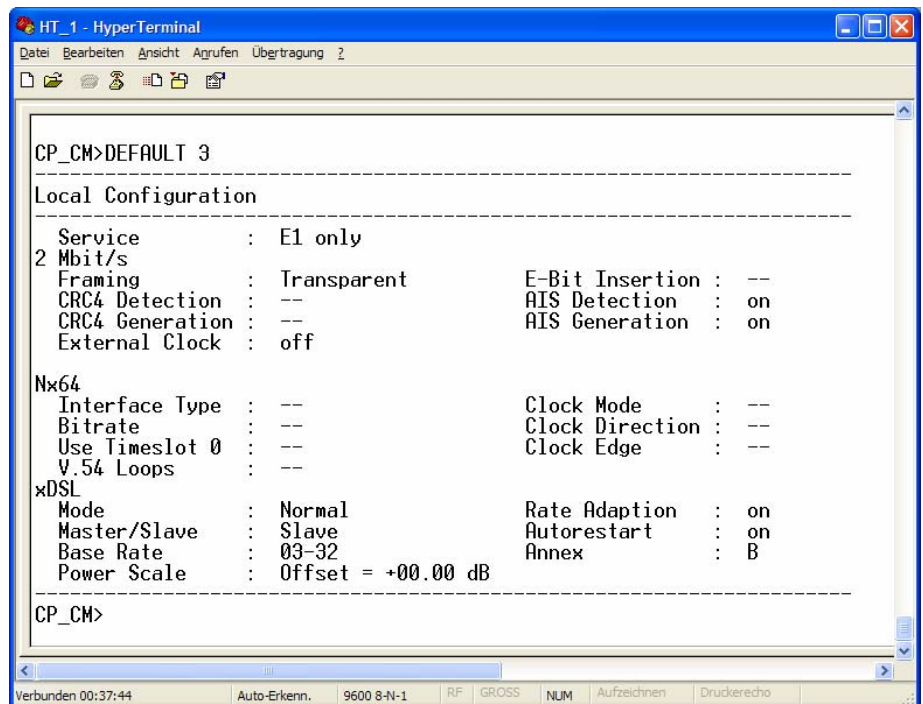
HT_1 - HyperTerminal
Datei Bearbeiten Ansicht Anrufen Übertragung 2
CO_CM>DEFAULT 1
-----
Local Configuration
-----
Service          : E1 only
2 Mbit/s
Framing          : ITU-T G.704      E-Bit Insertion : --
-----
CRC4 Detection   : on              AIS Detection    : on
CRC4 Generation : off             AIS Generation   : on
External Clock  : off             PCM Mode        : PCM31
Nx64
Interface Type  : --              Clock Mode       : --
Bitrate         : --              Clock Direction  : --
Use Timeslot 0  : --              Clock Edge       : --
V.54 Loops      : --
xDSL
Mode            : Normal          Rate Adaption    : off
Master/Slave    : Master         Autorestart      : on
Base Rate       : 32             Annex            : B
Power Scale     : Offset = +00.00 dB PLL              : off
-----
-- more --
Voice
Voice Channels  : 0
TS Configuration
-----
| TS0 | E1 |
| 0   | 01 .. 31 |
-----
CO_CM>_
    
```

<DEFAULT 2>
To get E1/G.704 in framed mode as MASTER with CRC4 generation

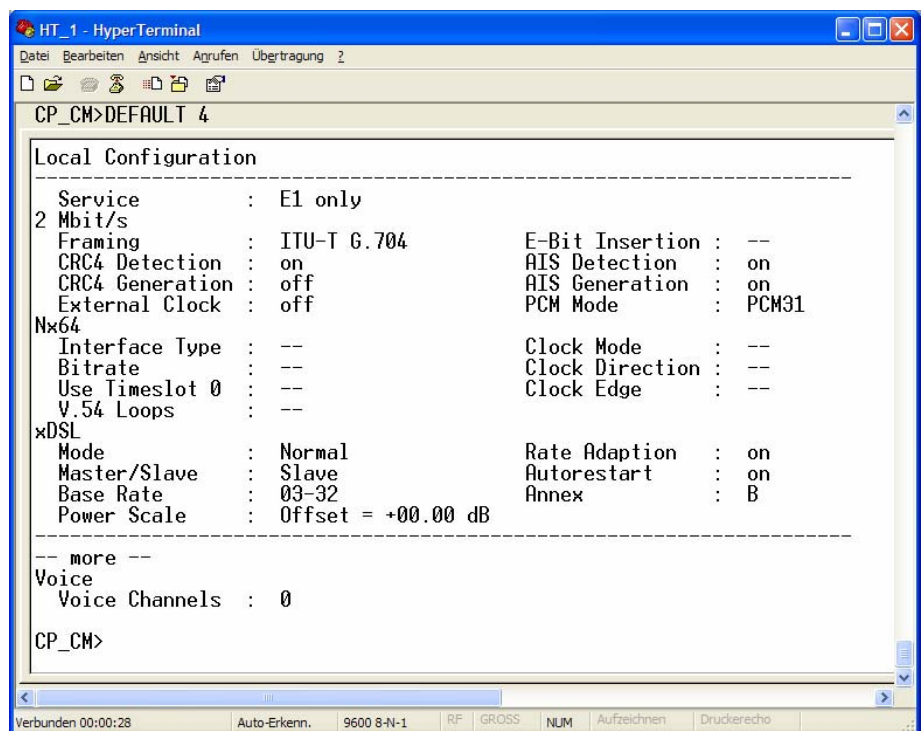
```

HT_1 - HyperTerminal
Datei Bearbeiten Ansicht Anrufen Übertragung 2
CO_CM>DEFAULT 2
-----
Local Configuration
-----
Service          : E1 only
2 Mbit/s
Framing          : ITU-T G.704      E-Bit Insertion : on
-----
CRC4 Detection   : on              AIS Detection    : on
CRC4 Generation : on             AIS Generation   : on
External Clock  : off             PCM Mode        : PCM31
Nx64
Interface Type  : --              Clock Mode       : --
Bitrate         : --              Clock Direction  : --
Use Timeslot 0  : --              Clock Edge       : --
V.54 Loops      : --
xDSL
Mode            : Normal          Rate Adaption    : off
Master/Slave    : Master         Autorestart      : on
Base Rate       : 32             Annex            : B
Power Scale     : Offset = +00.00 dB PLL              : off
-----
-- more --
Voice
Voice Channels  : 0
TS Configuration
-----
| TS0 | E1 |
| 0   | 01 .. 31 |
-----
CO_CM>_
    
```

Use <DEFAULT 3>
To get E1/G.703 in
transparent mode as
SLAVE



<DEFAULT 4>
To get E1/G.704 in
framed mode as SLAVE



<DEFAULT 5>
To get E1/G.704 in
framed mode as SLAVE
with CRC4 generation

```

HT_1 - HyperTerminal
Datei Bearbeiten Ansicht Agrufen Übertragung 2
CP_CM>DEFAULT 5
Local Configuration
-----
Service           : E1 only
2 Mbit/s
Framing           : ITU-T G.704      E-Bit Insertion : on
CRC4 Detection    : on                AIS Detection   : on
CRC4 Generation  : on                AIS Generation  : on
External Clock   : off                PCM Mode       : PCM31
Nx64
Interface Type   : --                Clock Mode     : --
Bitrate          : --                Clock Direction: --
Use Timeslot 0   : --                Clock Edge    : --
V.54 Loops       : --
xDSL
Mode             : Normal          Rate Adaption  : on
Master/Slave     : Slave           Autorestart    : on
Base Rate        : 03-32          Annex         : B
Power Scale      : Offset = +00.00 dB
-----
-- more --
Voice
Voice Channels   : 0
CP_CM>_

```

For a typical configuration set one unit to “MASTER” (CO) the other to “SLAVE” (CPE).
Command: “MASTER ON” or “MASTER OFF”

In Europe use “ANNEX B” for USA “ANNEX A”.

For a remote restart use in FMM (2) menu the command RESET

To connect to the remote (SLAVE) device use in menu Configuration Management (3) the
command “CONNECT R” and you will get displayed the Slave

To connect to a repeater, if there is one available, use the numbers “1 to 8” instead of “R”