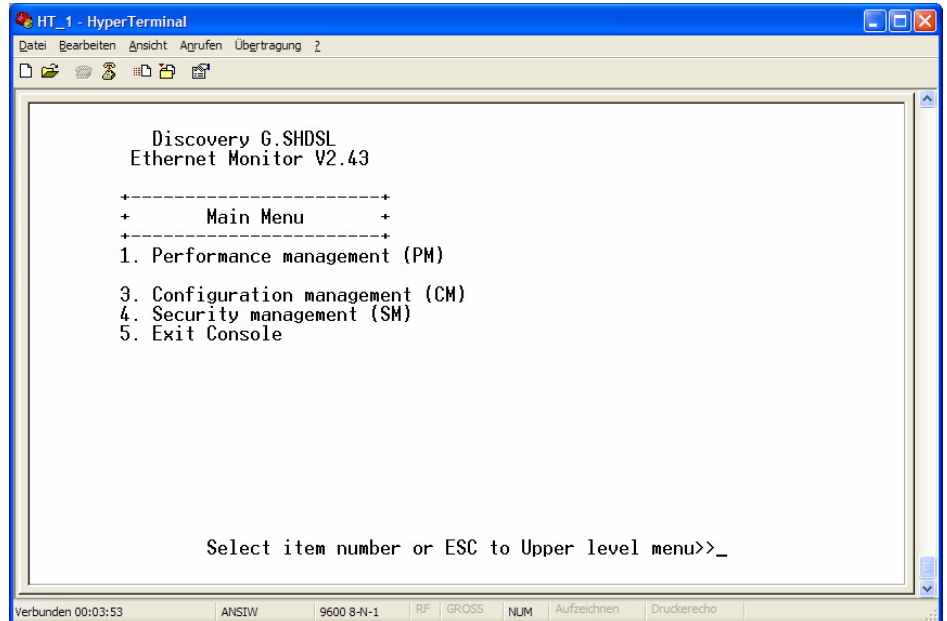


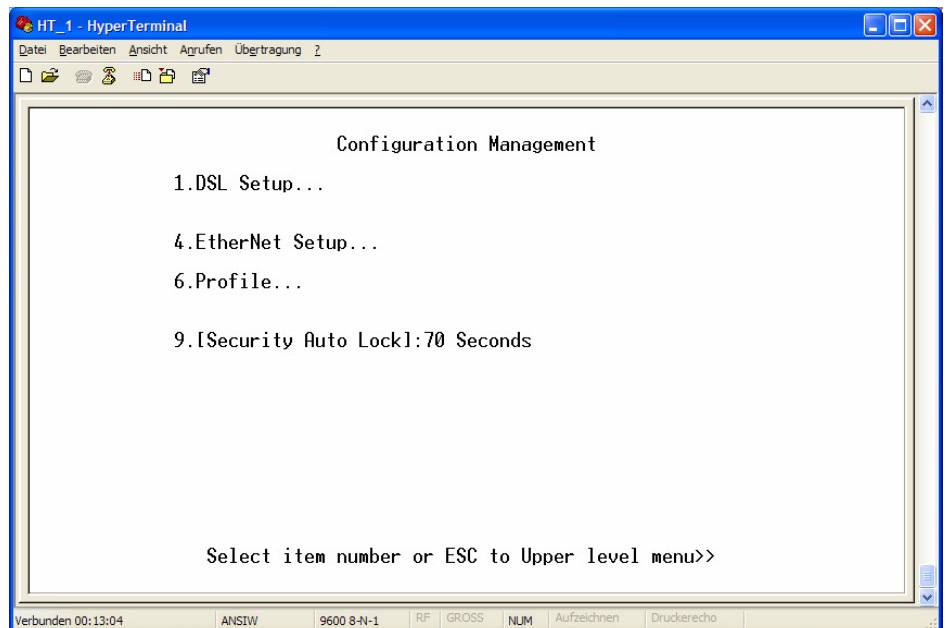
# Quick Install Guide EtherLink 2/4-Wire

Use Hyper Terminal or equal: 9600/8/N/1

Press **3** and **ENTER**

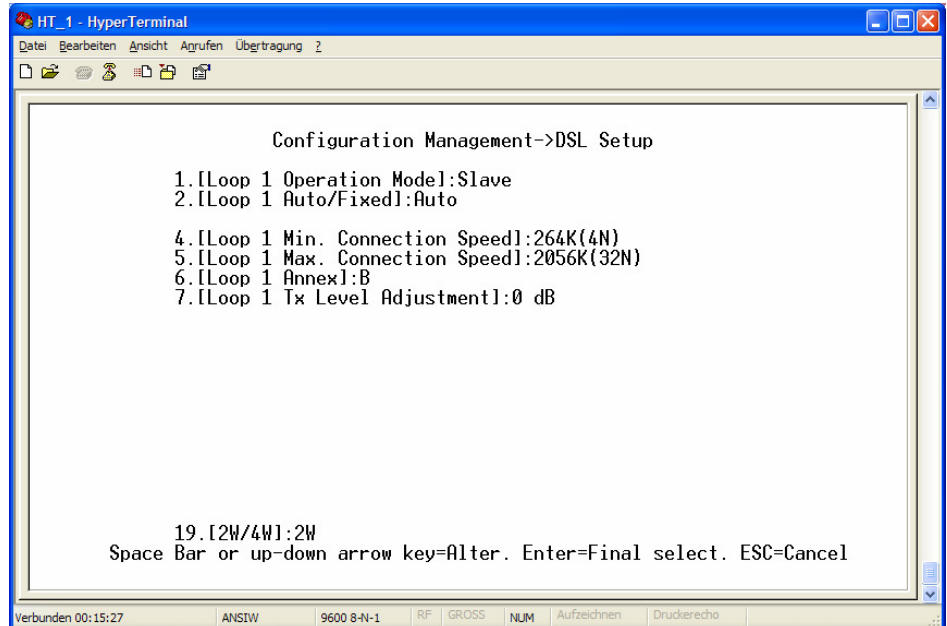


Press **1** and **ENTER**



Press **1** and **ENTER**,  
**SPACE BAR** to change to  
SLAVE. Hit **ENTER** for final  
select.

One has to be **MASTER**  
and the other **SLAVE**



```

HT_1 - HyperTerminal
Datei Bearbeiten Ansicht Agrufen Übertragung ?
[Icons]

Configuration Management->DSL Setup

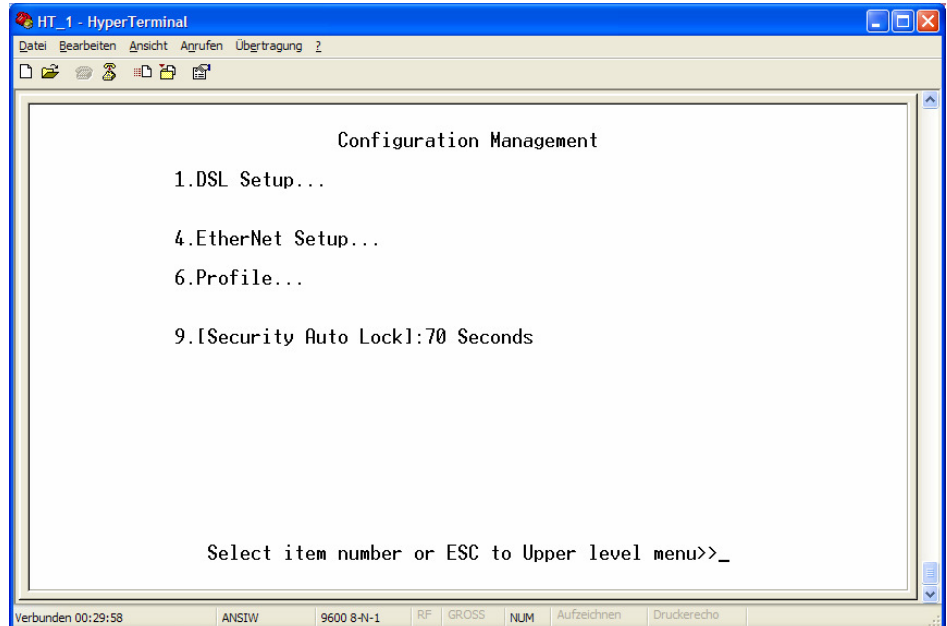
1.[Loop 1 Operation Model]:Slave
2.[Loop 1 Auto/Fixed]:Auto

4.[Loop 1 Min. Connection Speed]:264K(4N)
5.[Loop 1 Max. Connection Speed]:2056K(32N)
6.[Loop 1 Annex]:B
7.[Loop 1 Tx Level Adjustment]:0 dB

19.[2W/4W]:2W
Space Bar or up-down arrow key=Alter. Enter=Final select. ESC=Cancel

Verbunden 00:15:27 ANSIW 9600 8-N-1 RF GROSS NUM Aufzeichnen Druckerecho
  
```

Press **ESC** to go upper  
level menu, press **6** and  
**ENTER** (Profile)



```

HT_1 - HyperTerminal
Datei Bearbeiten Ansicht Agrufen Übertragung ?
[Icons]

Configuration Management

1.DSL Setup...

4.EtherNet Setup...

6.Profile...

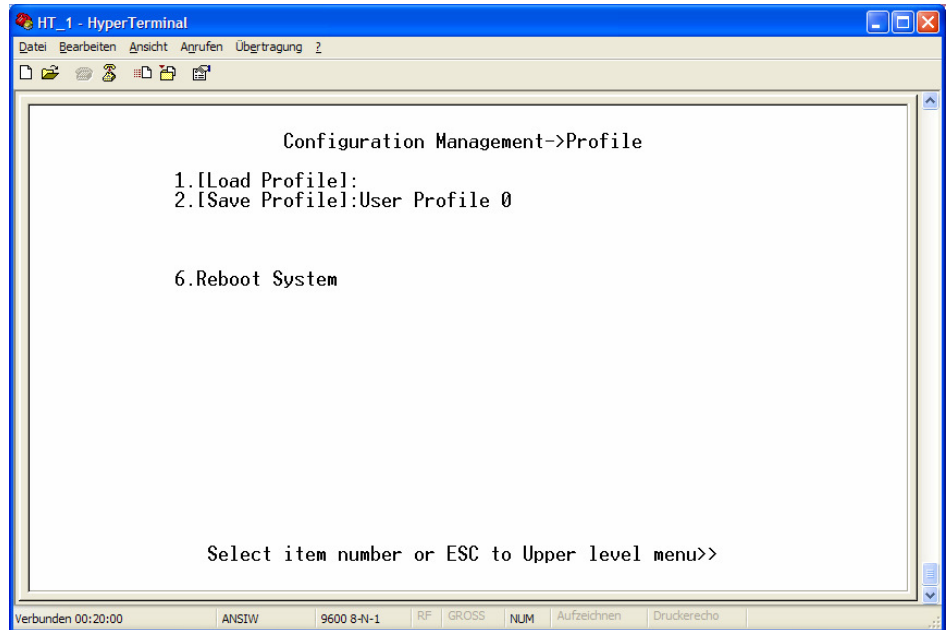
9.[Security Auto Lock]:70 Seconds

Select item number or ESC to Upper level menu>>_

Verbunden 00:29:58 ANSIW 9600 8-N-1 RF GROSS NUM Aufzeichnen Druckerecho
  
```

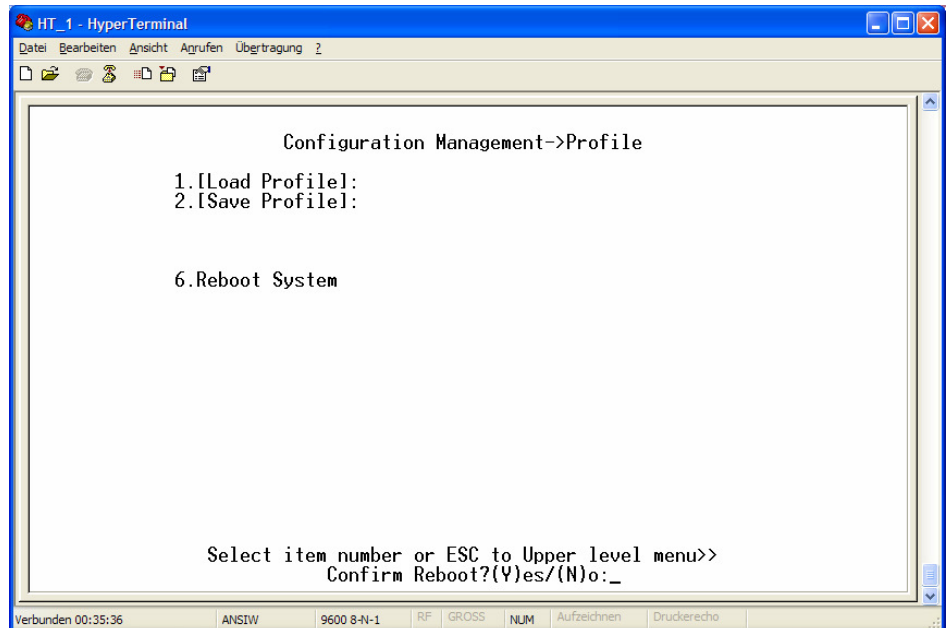
Choose **2** (Save Profile).  
Choose between (**SPACE BAR** to change) User Profile 0 – User Profile 3  
Hit **ENTER** for saving.

User Profile 0 will be loaded at start up.



Press **6 ENTER** for REBOOT SYSTEM

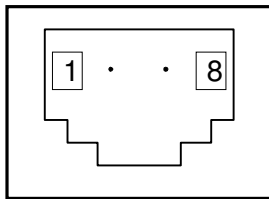
Confirm Reboot with key: **Y**



## Connector's description

### ***DSL Connector for SAN units (Stand Alone).***

Type: RJ-45, 8 pin

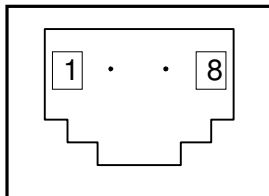


RJ-45

<i>Number</i>	<i>Signal</i>	<i>Assignment</i>
1,2	NC	-
3	LB,a	tip (4W model only)
4	LA,a	tip
5	LA,b	ring
6	LB,b	ring (4W model only)
7,8	NC	-

### ***DSL Connector for SRL units (Rack Cards).***

Type: RJ-45, 8 pin

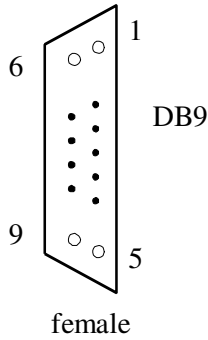


RJ-45

<i>Number</i>	<i>Signal</i>	<i>Assignment</i>
1	LB,a	tip (4W model only)-
2	LB,b	ring (4W model only)
3	NC	-
4	LA,a	tip
5	LA,b	ring
6,7,8	NC	-

**Monitor Connector**

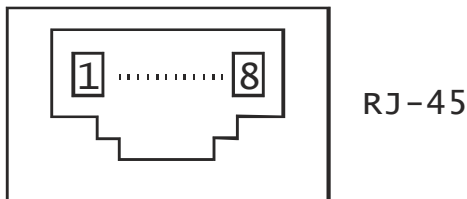
Type: Sub-D9, female



Number	Signal	Assignment
1	NC	-
2	TXD	Transmit data
3	RXD	Receive data
4	DTR	Data terminal ready
5	SGND	Signal ground
6	NC	-
7	NC	-
8	NC	-
9	NC	-

**Hub Connector**

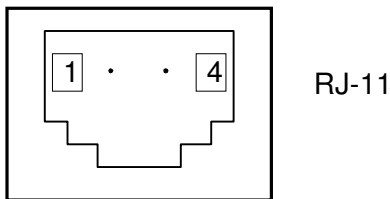
Type: RJ-45



Number	HUB assignment
1	Rx+
2	Rx-
3	Tx+
4	NC
5	NC
6	Tx-
7	NC
8	NC

**Line1 and Line2 Connector (only FXO/FXS models)**

Type: RJ-11, 4 pin



Number	Signal	Assignment
1	NC	-
2	LA,a	tip
3	LA,b	ring
4	NC	-