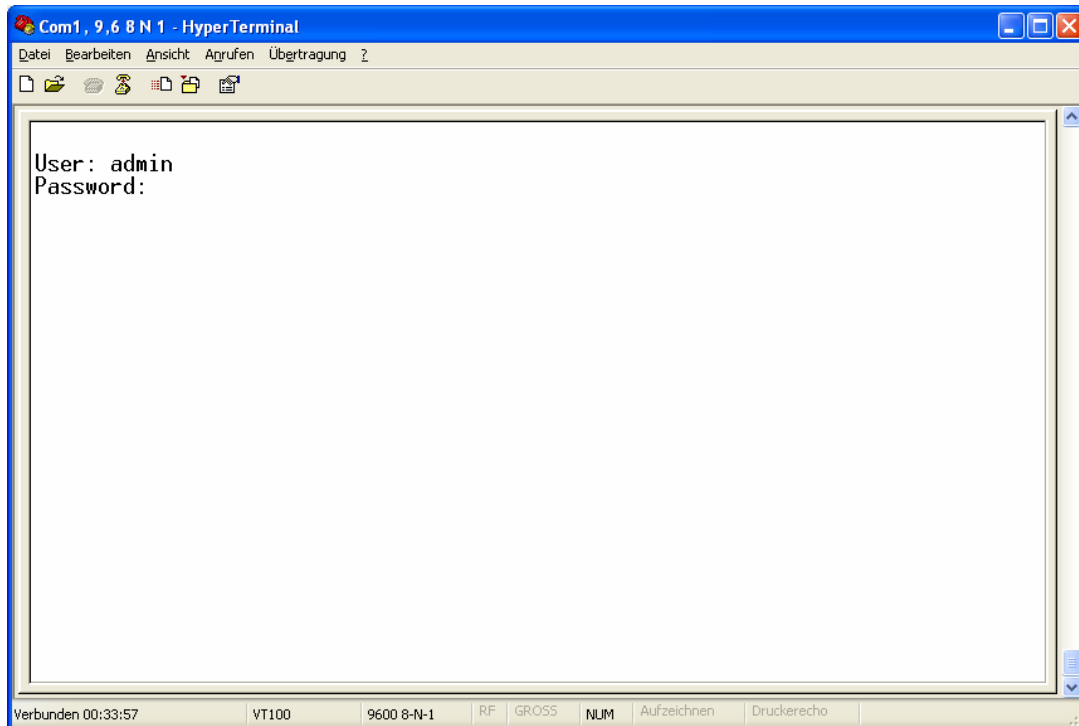
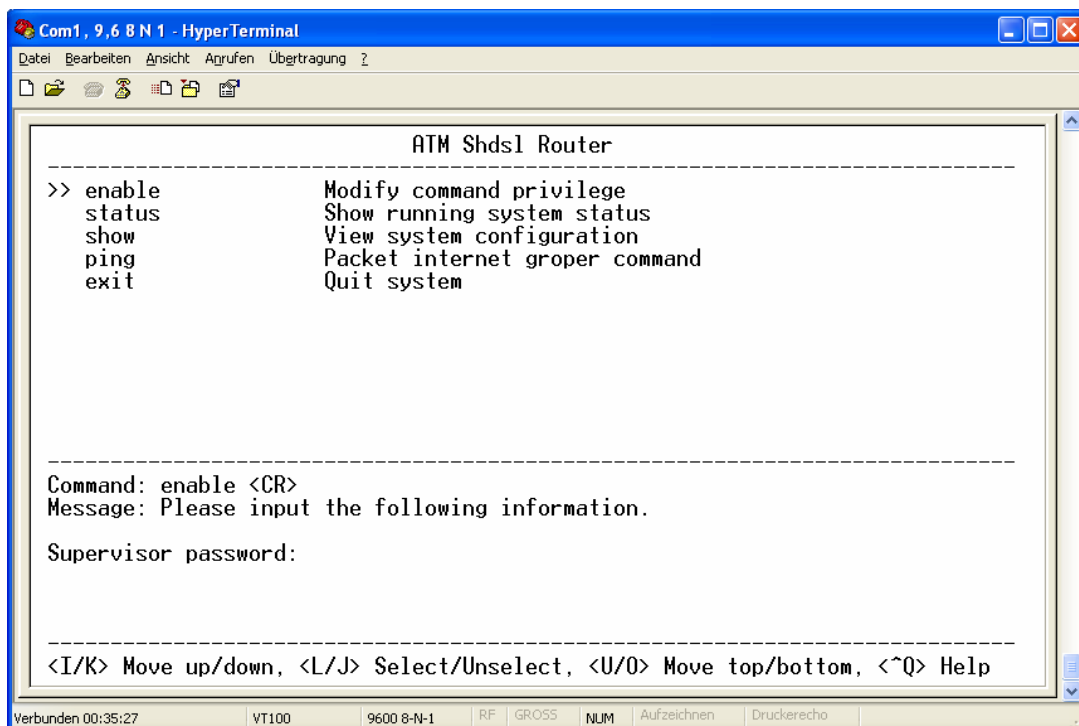


QIG-ATM-4ETH

Hyperterminal: 9600/8/N/1

User: admin

Password: admin

Enable command mode:
Supervisor password: root

WEB interface config:

Default IP: 192.168.0.1

User: root

Password: root



Set one as **CO** and the other as **CPE**, => **NEXT**



Set your preferred IP Address, Mask and Gateway...
Set the same VPI and VCI on both units. => **NEXT**

SOHO Router Remote Management and Configuration - Microsoft Internet Explorer

Adresse <http://192.168.0.113/>

ATM G.shdsl ROUTER

Home Basic **Advanced** Status Admin Utility

BASIC - STEP 2

LAN:

IP Address: 192 . 168 . 0 . 1

Subnet Mask: 255 . 255 . 255 . 0

Gateway: 192 . 168 . 0 . 254

Host Name: SOHO

WAN1:

VPI: 0

VCI: 32

Encap.: VC-mux LLC

Back Cancel Reset Next

=> **RESTART**

SOHO Router Remote Management and Configuration - Microsoft Internet Explorer

Adresse <http://192.168.0.113/>

ATM G.shdsl ROUTER

Home Basic **Advanced** Status Admin Utility

REVIEW:

To let the configuration that you have changed take effect immediately, please click Restart button to reboot the system.
To continue the setup procedure, please click Continue button.

- System Operation Mode:

System Mode	Bridge Mode
SHDSL Mode	CO Side
- LAN Interface:

IP Type	Fixed
IP Address	192.168.0.1
Subnet Mask	255.255.255.0
Gateway	192.168.0.254
Hostname	SOHO
- WAN1 interface:

VPI	0
VCI	32
AAL5 Encap.	LLC

Continue Restart

The config will be saved and modem restarts.