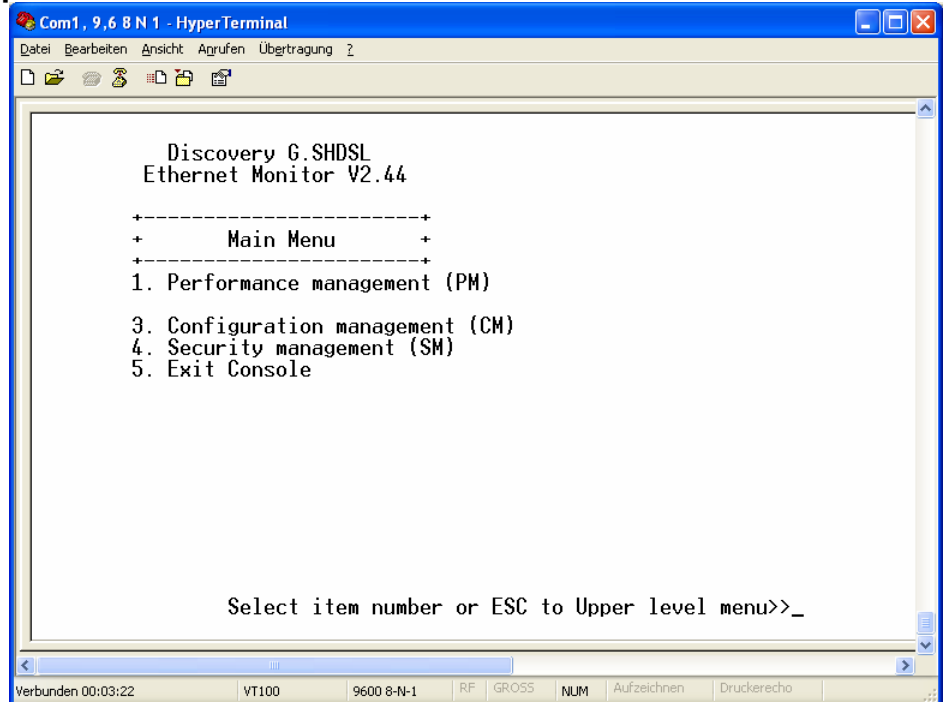


Quick Install Guide 4-Wire Bridge Modem 1+1 Mode with Firmware 2.44

Use Hyper Terminal or equal: 9600/8/N/1

Press **3** and **ENTER**

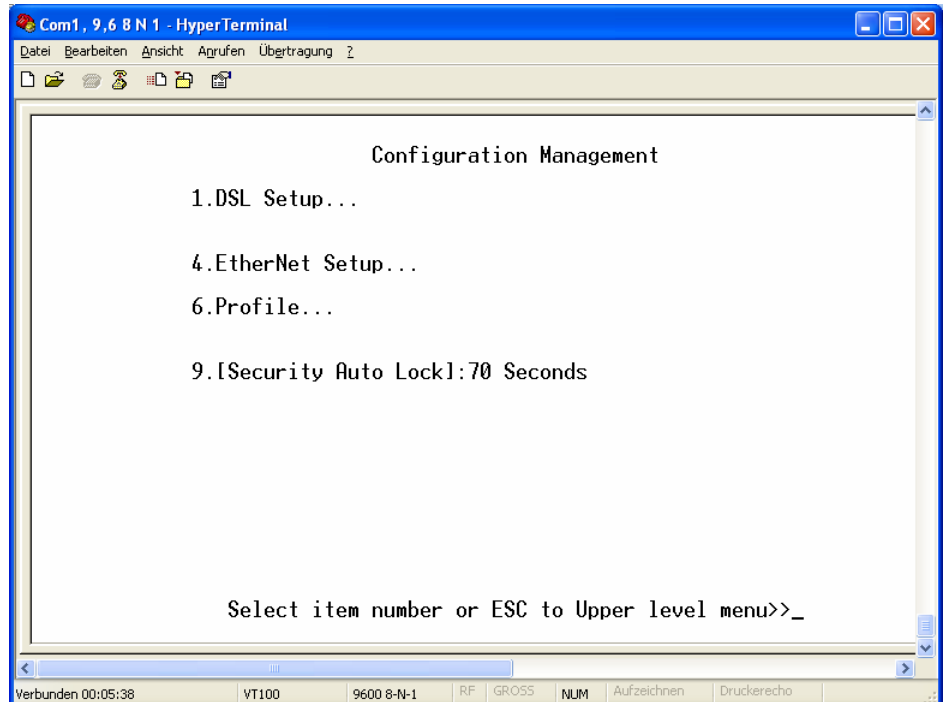


```
Com1, 9,6 8 N 1 - HyperTerminal
Datei Bearbeiten Ansicht Anrufen Übertragung ?
Discovery G.SHDSL
Ethernet Monitor V2.44
+-----+
+   Main Menu   +
+-----+
1. Performance management (PM)
3. Configuration management (CM)
4. Security management (SM)
5. Exit Console

Select item number or ESC to Upper level menu>>_

Verbunden 00:03:22    VT100    9600 8-N-1    RF    GROSS    NUM    Aufzeichnen    Druckerecho
```

Press **1** and **ENTER**



```
Com1, 9,6 8 N 1 - HyperTerminal
Datei Bearbeiten Ansicht Anrufen Übertragung ?
Configuration Management
1. DSL Setup...
4. EtherNet Setup...
6. Profile...
9. [Security Auto Lock]:70 Seconds

Select item number or ESC to Upper level menu>>_

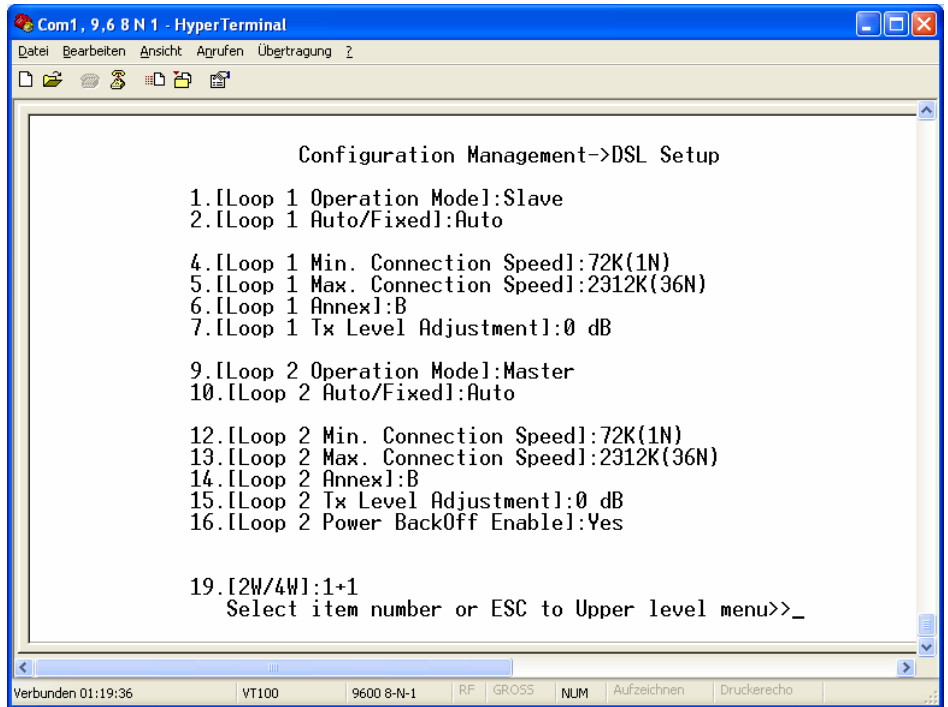
Verbunden 00:05:38    VT100    9600 8-N-1    RF    GROSS    NUM    Aufzeichnen    Druckerecho
```

For supporting **1+1 mode** (4-Wire Rate adaptive) it is necessary to have cross-DSL-cable (**channel 1** of modem1 must be connected to **channel 2** of modem 2 and vice versa). The configuration of DSL must be as below:

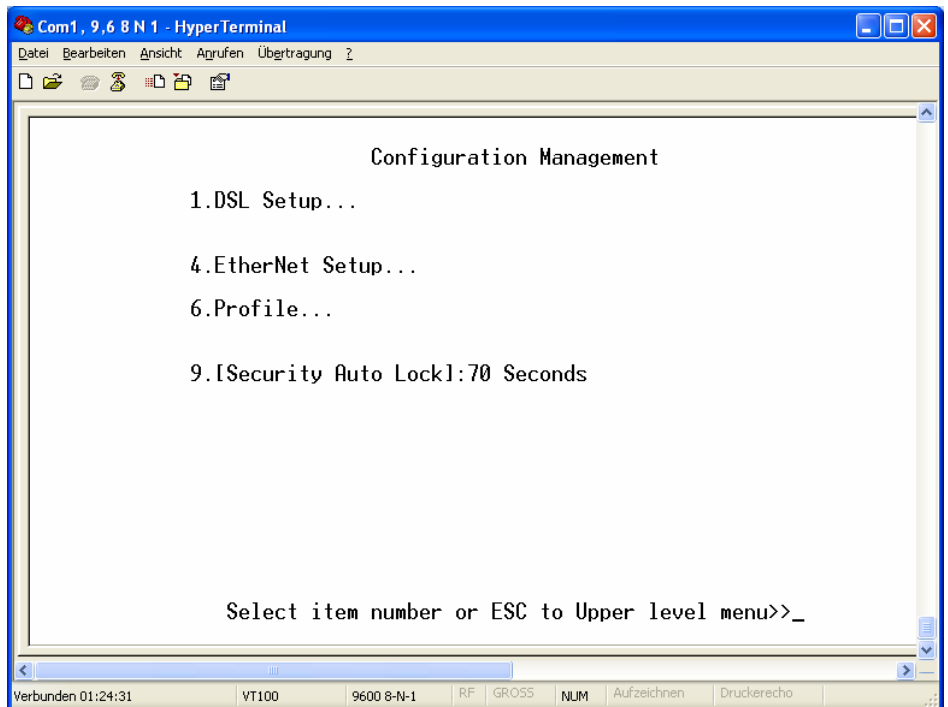
Press **1** and **ENTER**, **SPACE BAR** to change to SLAVE. Hit **ENTER** for final select.

1 has to be **SLAVE**
9 has to be **MASTER**

19 has to be **1+1**



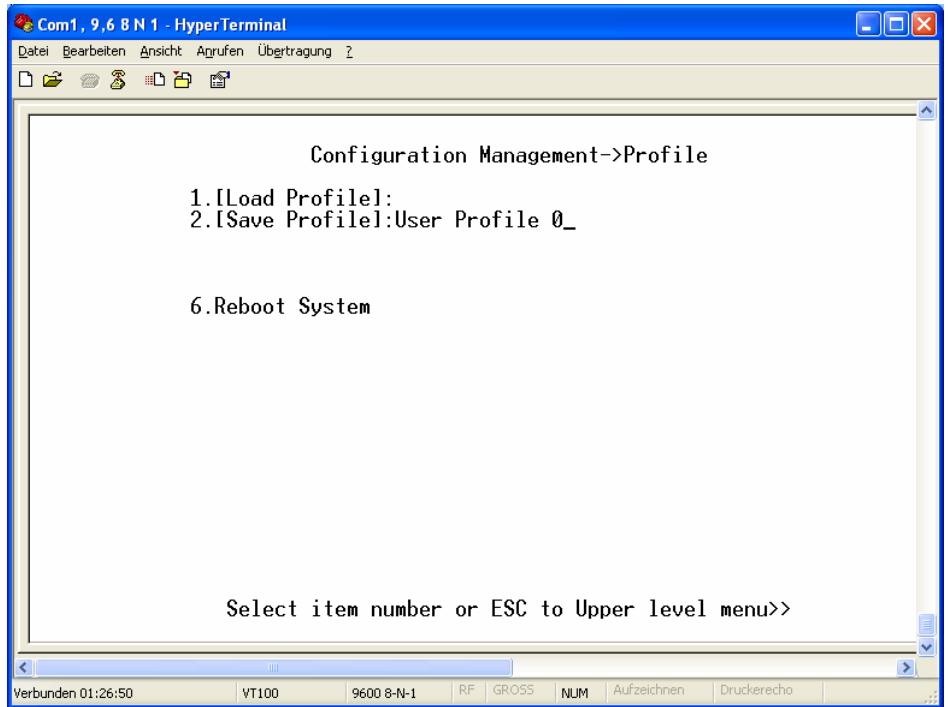
Press **ESC** to go upper level menu, press **6** (Profile) and **ENTER**



Choose **2** (Save Profile).

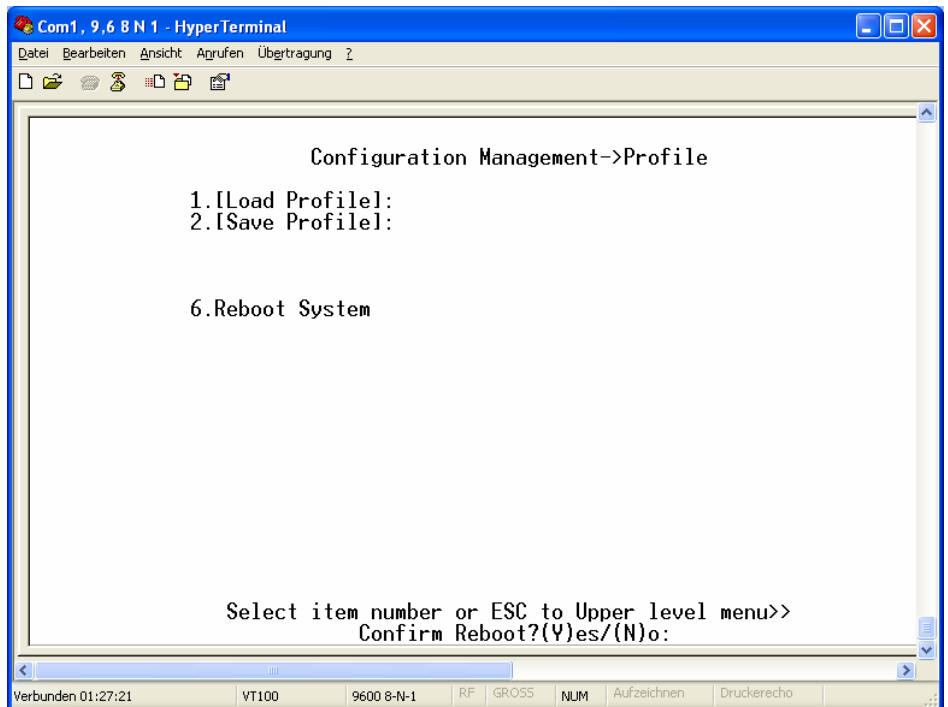
Choose between (**SPACE BAR** to change) User Profile 0 – User Profile 3
Hit **ENTER** for saving.

User Profile 0 will be loaded at start up.



Press **6 ENTER** for REBOOT SYSTEM

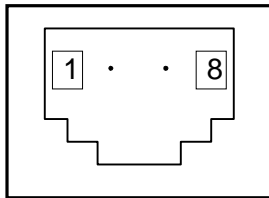
Confirm Reboot with key: **Y**



Connector's description

DSL Connector for SAN units (Stand Alone).

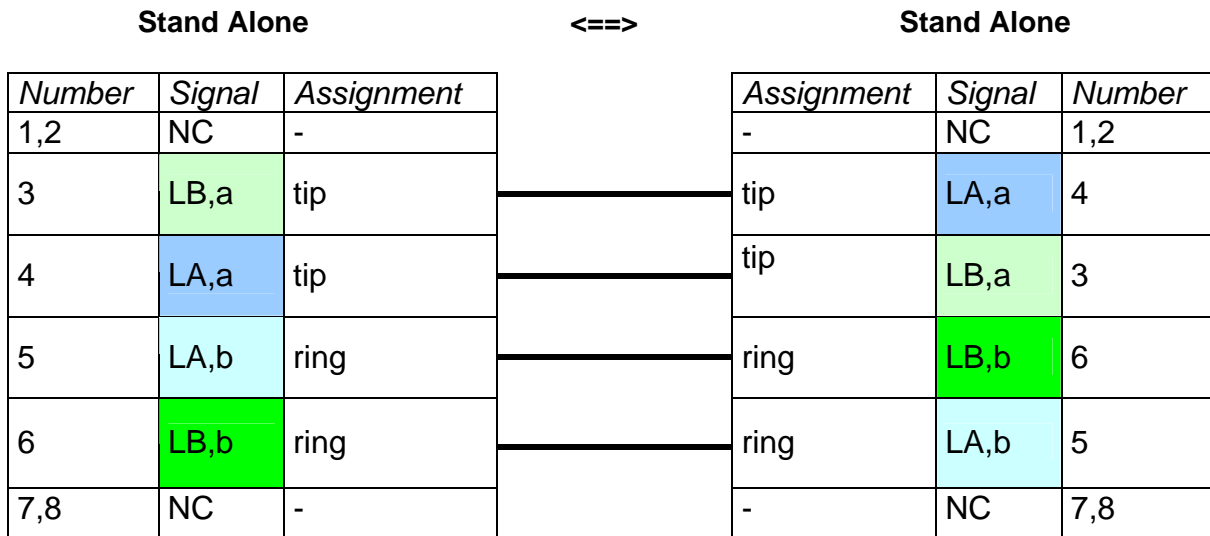
Type: RJ-45, 8 pin



RJ-45

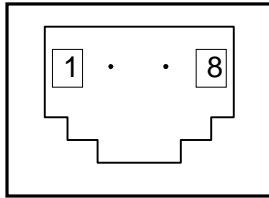
Number	Signal	Assignment
1,2	NC	-
3	LB,a	tip (4W model only)
4	LA,a	tip
5	LA,b	ring
6	LB,b	ring (4W model only)
7,8	NC	-

For supporting **1+1 mode** (4-Wire Rate adaptive) it is necessary to have cross-DSL-cable:



DSL Connector for SRL units (Rack Cards).

Type: RJ-45, 8 pin



RJ-45

Number	Signal	Assignment
1	LB,a	tip (4W model only)-
2	LB,b	ring (4W model only)
3	NC	-
4	LA,a	tip
5	LA,b	ring
6,7,8	NC	-

For supporting **1+1 mode** (4-Wire Rate adaptive) it is necessary to have cross-DSL-cable:

Rack Card

<==>

Rack Card

Number	Signal	Assignment
1	LB,a	tip
2	LB,b	ring
3	NC	-
4	LA,a	tip
5	LA,b	ring
6,7,8	NC	-

Assignment	Signal	Number
tip	LA,a	4
ring	LA,b	5
-	NC	3
tip	LB,a	1
ring	LB,b	2
-	NC	6,7,8

Rack Card

<==>

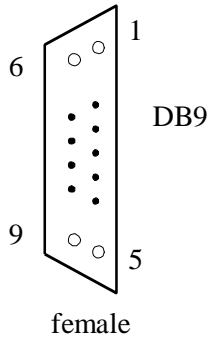
Stand Alone

Number	Signal	Assignment
1	LB,a	tip
2	LB,b	ring
3	NC	-
4	LA,a	tip
5	LA,b	ring
6,7,8	NC	-

Assignment	Signal	Number
tip	LA,a	4
ring	LA,b	5
-	NC	1,2
tip	LB,a	3
ring	LB,b	6
-	NC	7,8

Monitor Connector

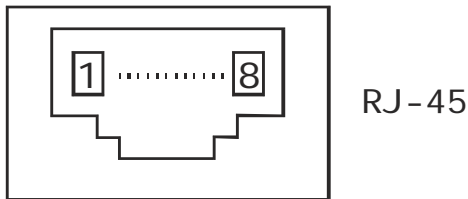
Type: Sub-D9, female



Number	Signal	Assignment
1	NC	-
2	TXD	Transmit data
3	RXD	Receive data
4	DTR	Data terminal ready
5	SGND	Signal ground
6	NC	-
7	NC	-
8	NC	-
9	NC	-

Hub Connector

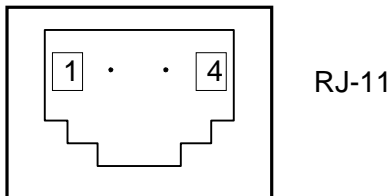
Type: RJ-45



Number	HUB assignment
1	Rx+
2	Rx-
3	Tx+
4	NC
5	NC
6	Tx-
7	NC
8	NC

Line1 and Line2 Connector (only FXO/FXS models)

Type: RJ-11, 4 pin



Number	Signal	Assignment
1	NC	-
2	LA,a	tip
3	LA,b	ring
4	NC	-