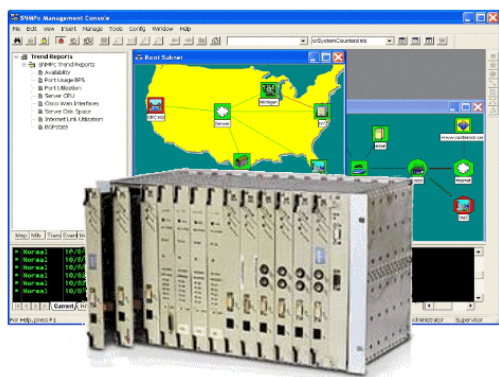


Access Platform**Multiservice****& Management**

S-Access AccessGain Platform

Universal Access Platform



Features

- TDM and IP Coexistence
- Universal Multiservice Platform
- Multipurpose 19" Mechanics
- Universal Desktop Housings
- Extensive Management Options
- Fail-Safe through Redundancy
- Flexibility through Modular Design
- Scalability through Upgrade Path
- Quality through S-Access

AccessGain Platform – One Platform Fits All!

The AccessGain Access Platform family brings a broad range of universal transmission platforms together. Alongside Castlerock SNMPc management software, the AccessGain Platform is a powerful telecommunication solution for telecom, utility, and campus applications. While hosting S-Access Etherlink, Etherlink II, and Discovery products and providing an extensive range of SHDSL connectivity, the AccessGain Platform additionally supports fiber optic, cross connect (DACs) and voice and data multiplexers for a broad range of TDM and packet based applications. The AccessGain Platform is designed with front access shelves and it is the missing link between fiber and copper transmission requirements. These features and others, ensure that the AccessGain Platform family is the first choice solution when flexibility, cost effectiveness, reliability, and quality are the required attributes.

AccessGain Platform – Grow As You Go!

Unlike traditional repeater bay, DSLAM, or DLC products, the AccessGain Access Platform is not just a product, it is a comprehensive solution offering the opportunity to start with a small footprint and to grow as you go. This approach secures investments while providing an upgrade path to future applications and businesses.

AccessGain Platform

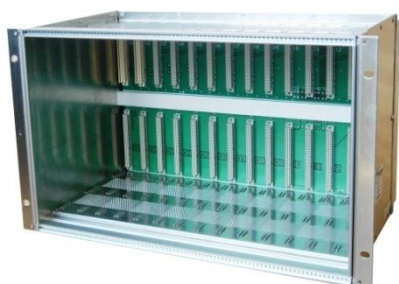
There are no more debates about the various benefits of TDM or IP centric applications. Both technologies have their strength and these strengths have been combined in the AccessGain Platform by allowing coexistence and convergence of both technologies in the same platform. With DSL, fiber, DACs, Mux, VoIP, TDMoIP, Ethernet Switch, and Management options S-Access Access Is a full Access Platform.

Access Platform

Multiservice

& Management

AccessGain Universal Access Platform



Model: SA-R-W, V2

Dimensions: 19"/6U, 439x266x248mm (WxHxD), 3.6kg
 Number of Slots: 14
 - 1 slot for power supply or power supply / management module
 - 1 optional management or uplink module
 Power: Requires power module (SA-ACU-SR or SA-TCU-SR)
 Backplane: Upper backplane only
 System Bus: - Ethernet Bus
 - RS485
 - RS232
 Remark: All front access shelf
 Power module (48VDC): SA-ACU-SR
 Management / power module: SA-TCU-SR

Model: SA-R-PCM/W, V2

Dimensions: 19"/6U, 439x266x248mm (WxHxD), 4kg
 Number of Slots: 14
 - 1 slot for power supply or power supply / management module
 - 1 optional management or uplink module
 Power: Requires power module (SA-ACU-SR or SA-TCU-SR)
 Backplane: Upper and lower backplane (for voice applications)
 System Bus: - Ethernet Bus
 - RS485
 - RS232
 Remark: Lower backplane for voice applications only (back access)
 Power module (48VDC): SA-ACU-SR

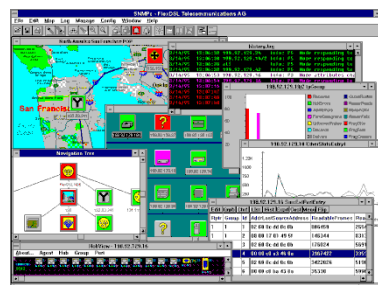
Model: SA-ACU-SR

Dimensions: Power module for SA-R-W, V2 and SA-R-PCM/W, V2,
 Power: 2x 48VDC (redundant), max. 8A
 Alarming: Minor and major alarm detection
 Management: Console port
 Remark: External clocking input

Model: SA-TCU-SR

Dimensions: Power and management module for SA-R-W, V2 and SA-R-PCM/W, V2, uses slot 1 or 2
 Power: 2x 48VDC (redundant), max. 8A
 Alarming: Minor and major alarm detection
 Management: Console port, Telnet, SNMP V1
 Alarming: Minor and major alarm detection
 Remark: Internal 4 port Ethernet switch. External clocking input

SNMPC Network Manager Software
 from Castle Rock Computing, Inc.
www.castlerock.com



Access Platform

Multiservice

& Management



Model: SA-MRN-AC/DC

Dimensions: 19"/1U, 439x258x43mm (WxHxD), 3.1kg
Number of Slots: 1
Power: 48VDC and/or 220VAC
Remark: 48VDC and voice connectors on the back site



Model: SA-DESK-TOP_1-48

Dimensions: 19"/1U, 439x258x43mm (WxHxD), 3.1kg
Number of Slots: 1 for one Rackcard Module
Power: 48VDC
Remark: 48VDC and Monitor connectors on the back site



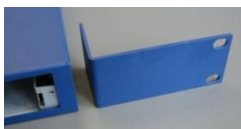
Model: SA-DESK-TOP_1-48AF

Dimensions: 19"/1U, 288x335x45mm (WxHxD), 3.1kg
Number of Slots: 1 for one Rackcard Module
Power: 48VDC
Remark: 48VDC and Monitor connectors on the back site.
Alarm Interface and Filtering included.



Model: SA-DESK-TOP_1-48AF230

Dimensions: 19"/1U, 288x335x43mm (WxHxD), 3.1kg
Number of Slots: 1 for one Rackcard Module
Power: 48VDC / 230VAC
Remark: 48VDC, 230VAC and Monitor connectors on the back site.
Alarm Interface and Filtering included.



Model: SA-DESK-TOP_1-Holder19"

Dimensions: Holder for 19"/1U
Number of Slots: 1 for one Rackcard Module