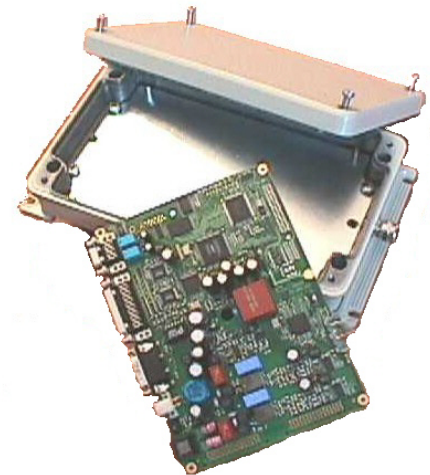


EtherLink

New Generation Ethernet Modems

Main Features

- TC-PAM (G.SHDSL) multi-rate line coding
- CO (IP DSLAM) and CPE applications
- VLAN (IEEE 802.1q) functionality
- Ethernet 10/100BT user interface.
- Bridge functionality IEEE 802.1q
- 1 + 1 protection option
- VT100 and DIP-switch configuration
- Telnet and SNMP* management option
- Up to 24 ports in one shelf (CO side)
- 2.3Mbps and 4.6Mbps Stand-Alones
- Long Distance transmission over single pair
- Subrack, Mini-rack or Standalone
- Easy software upgrade with flash ROM
- High Quality and Performance



Faster and Easier Internet Access and LAN-to-LAN Interconnection without ATM DSLAM infrastructure

AccessDSL Etherlink is designed for business-oriented high-speed Internet access. *AccessDSL* Etherlink series is applicable as a fully scalable CO IP-DSLAM product, where investments are synchronized with demand. *AccessDSL* Etherlink allows to extend the capacity of the CO shelf with one or two DSL ports increments so the provider still benefits from the very economical link price. Using Discovery stand-alones for the CPE side, the Universal CO shelf accommodates also many other *AccessDSL/AccessGain* products like E1/N64 DSL modems, VoIP gateways, fiber-optic modems, cross-connect, voice and data TDM mux.

AccessDSL Etherlink series offers symmetrical service at the speed from 192kbps to 4.6Mbps for the distances up to 7km over one or two copper pairs. Symmetrical transmission (unlike ADSL) implies no application limitations. High-speed bi-directional transmission is very suitable for business DSL subscribers who prefer to run WWW and mail server's at-site, in the local LAN. Another key feature of *AccessDSL* Etherlink - VLAN functionality - helps to build corporate virtual networks connecting branch offices and home-employed staff.

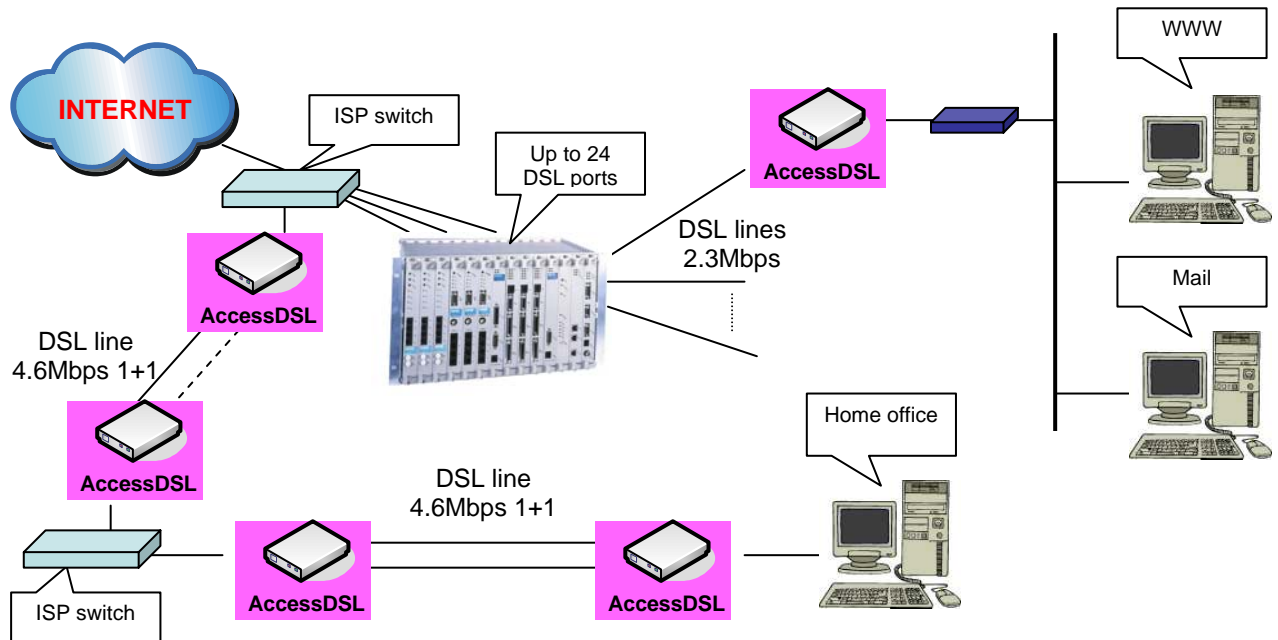
Protected (1+1) operation over two copper pairs with a maximum speed of 4.6Mbps is an advanced option of *AccessDSL* Etherlink to support VIP DSL services and trunk communications between ISP' switches. Independent line speed adjustment for each pair allows optimal speed-distance ratio.

Unlike many other Ethernet DSL modems, *AccessDSL* Etherlink uses Ethernet over DSL technology. It secures 95% of the DSL channel capacity for customer traffic, thus, providing up to 530kbyte/s file transfer rate, that is, 10-15% faster comparing to Ethernet over ATM based DSLAM and CPE devices.

Being focused on ISP applications where connection cost, manageability and security are the major factors, *AccessDSL* Etherlink works as a transparent bridge, where all CPE units are fully controllable and configurable from the CO side locally or via centralized management system. Taking into account the increasing threat of Internet based intrusions, firewall and router/switch functions, which are the keys to the subscribers' corporate security, are left to external devices to be completely independent from the DSL service provider.

As on operator-class DSL devices *AccessDSL* Etherlink offers extended operation statistics, including such parameters as number of packets transmitted in both directions, total service and out-of-service time, number of lost connections, total working time.

AccessDSL Etherlink application for Internet Access and network element connections



SPECIFICATIONS

Line code

TC-PAM (G.SHDSL) or 2B1Q, 1 or 2 pair

Reach (0.4 mm), 2 Mbps

3,9km for G.SHDSL - 3.4 km for 2B1Q

Line rates

192, 272, 400, 528, 784, 1040, 1552, 2064, 2320 kbps – 4640kps using two pairs

Line Connector

RJ11

Monitor

RS232 DB9F

User Interfaces

Ethernet 10/100BaseT RJ45

Bridging

IEEE-802.1q

Management

VT100, Telnet, HTTP, SNMP

Electrical

AC Adapter: Input 230VAC, 50/60Hz Output: 12VDC 1A

Safety: UL & CE, EMC/EMI, FCC

Surge: Meet IEC 1000-4-5 class 2

Rehabilit: MTBF >35'000 Hours

Overvoltage Protection

ITU-T Rec. K.20/K.21

Physical dimensions

Stand Alone:

220mm x 170mm x 40mm / 0.5kg

Sub-Rack:

220mm x 170mm x 40mm / 0.5kg

Order Instructions

SA-PAM-SAN-Eth-RoHS

Stand Alone AccessDSL, 1*PAM, NTU, M/S, 10/100Base-T, bridge, extended line statistics, local power, including Power Adapter (Europe), DSL and Ethernet cables

SA-PAM-SRL-Eth-RoHS

RackCard AccessDSL, 1*PAM, NTU, M/S, 10/100Base-T, bridge, extended line statistics, local power, including DSL and Ethernet cables

SA-PAM-SR2L-Eth-RoHS

RackCard Dual AccessDSL, 2*PAM, LTU, M/S, 10/100Base-T, bridge, extended line statistics, including DSL and Ethernet cables

SA-PAM-SA2N-Eth-RoHS

Stand Alone Dual (2 or 4-wire) AccessDSL, 2*PAM, LTU, M/S, 10/100Base-T, bridge, extended line statistics, including Power Adapter (Europe), DSL and Ethernet cables

S-Access GmbH
Oberhausenstrasse 47
8907 Wettswil a/A
Switzerland

Tel: +41 44 700 31 11
Fax: +41 44 700 31 13
Email: contact@s-access.ch
WEB: <http://www.s-access.ch>